

BALMED

Brine and CO₂ baths



increased treatment efficiency

application:

- rehabilitation
- prophylaxis
- relaxation



MEDEN-INMED Sp. z o.o.

ISO certified company

ul. Wenedów 2

75-847 Koszalin, Poland

phone: + 48 94 344 90 50

mobile: + 48 601 646 866

fax: + 48 94 347 10 41

www.meden.com.pl

BALMED

A modern medical bath tub specially designed for CO₂ or brine balneology baths. Ergonomically shaped basin with comfortable rest for head and shoulders made of high quality acrylic resistant to temperature and chemicals. The standard colour is white (calypso green optional). The side covers are made of acrylic reinforced with polyester laminate. The water system (excluding connectors) is made of plastic. The external fittings are chromium plated.

Additional options:

- **AIR 64** - 64 aeration nozzles to air bubble massage, air heating system, independent air pump
- **SPUST XL** - drainage of an enlarged diameter for baths in the slurry, such as mud
- **CHROMO 2R** - chromotherapy - 2 lamps (8 colors)
- **CHROMO 4R** - chromotherapy - 4 lamps (8 colors)
- **CHROMO 12** - chromotherapy - 12 single light sources (8 colors)
- **CHROMO 24** - chromotherapy - 24 single light sources (8 colors)
- **CHROMO 36** - chromotherapy - 36 single light sources (8 colors)
- **AUDIO** - 2 speakers, sound input from an external device such as Hi-Fi, mp3 etc, mini jack or bluetooth connection
- **AROMA** - tank for 1 scent, dosing during treatment by using the key



BALMED is available in the following versions:

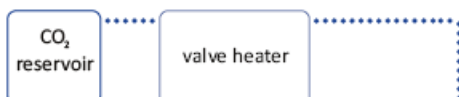
- **STANDARD** – capacity of 150 - 300 liters, water supply: warm and cold, warm water shower, 3 types of media: water saturated with CO₂, warm and cold brine.
- **ECO** - bath tub of reduced capacity 140 - 240 liters reducing the treatment costs, water supply: warm and cold, warm water shower, 3 types of media: water saturated with CO₂, warm and cold brine.

Brine baths can be warm, with temperature of 34 - 37° Celsius and 0.5 - 1.0% brine concentration or hot, with temperature of 37 - 40° Celsius and 2.0 - 3.0% brine concentration. For treatment in CO₂ saturated water users can apply both spring water (e.g. acidic) or water taken from our CARBOSAT saturator column.

TECHNICAL DATA:

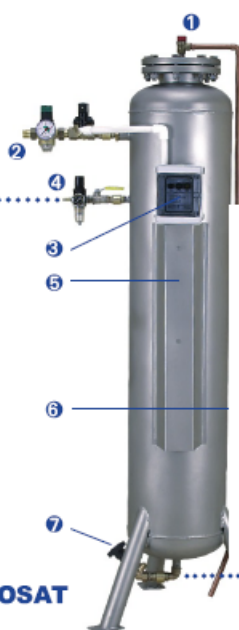
| | ECO | STANDARD |
|--|---------------|---------------|
| Capacity [l]: | 140 - 240 | 150 - 300 |
| H x W x L [mm]: | 615x750x1700 | 760x750x1950 |
| Number of filling nozzles: | 2 | 2 |
| Filling time [min.]: | 3 | 3,5 |
| Draining time [min.]: | 5 | 5 |
| Power supply (with AIR 64 CHROMO or AUDIO option): | 230 V / 50 Hz | 230 V / 50 Hz |

CARBOSAT



Modern, highly-efficient device for water carbonization designed to supply CO₂ saturated water on an ongoing basis.

- ① safety valve
- ② H₂O connector
- ③ controller
- ④ CO₂ connector
- ⑤ saturator tank
- ⑥ safety valve actuator
- ⑦ carbonised water outlet



CARBOSAT

CARBOSAT saturator TECHNICAL DATA:

| | |
|--|------------|
| Cold water connection [GZ]: | DN 20 3/4" |
| Saturated water outflow connection [GZ]: | DN 20 3/4" |
| Height/diameter [mm]: | 1870/324 |
| CO ₂ connection [mm]: | ID 8 drain |
| Output [l/min.]: | max. 50 |
| Power supply [VAC / Hz]: | 230 / 50 |
| Control voltage [VAC / Hz]: | 24 / 50 |
| Max. number of bath tubs connected: | 5 |



BALMED